

RPA SERIES INVERTED CEILING MOUNT

the focus:

The top-selling projector mount in the industry! More RPA Series Mounts are installed in offices, schools and homes than any other mount. Why is the RPA so popular? Because it gives you everything you need for a quick installation, low-profile look and hassle-free projector maintenance. Also, a winner in the Media & Methods 2003 Awards Portfolio for making a significant contribution to the school market.



FEATURES

- Low-profile, aesthetic design
- Quick projector disconnect/reconnect
- Steel-into-steel construction
- UL listed for proven strength
- Easy installation — no assembly
- Independent roll, pitch and yaw adjustments make it easy to precisely register the projector
- Disconnect without affecting adjustments
- Convenient lamp and filter access
- **All-Points™ Security System** included at no additional cost
- Three ceiling mounting methods
- Flush mount without disassembly
- Allows cables to be routed through the top of the mount without additional accessories
- Compatible with a large assortment of accessories to easily overcome a variety of installation challenges
- Allows lateral shift by adding the LSB-100 Lateral Shift Accessory
- Compatible with the PG-1 Projector Guard™ Security Cage
- Allows natural convection ventilation



SPECIFICATIONS

- Roll Adjustment: ±4 degrees adjustment up or down. Loosen screw, adjust mount and tighten screw to hold adjustment.
- Pitch Adjustment: ±25 degrees adjustment on each side of the mount. Loosen screw, adjust mount and tighten screw to hold adjustment. Full range of pitch in a flush mount installation.
- Yaw Adjustment: 360 degrees by turning the mount on the threaded column and securing in place with set screw. 12 degrees yaw possible on flush mount using slots in top of RPA.
- Color: Black
- Weight Capacity: 50 lbs.

FAQ

- Q. How much height will the RPA add to my installation?
A. The RPA top is only 1 3/4" high plus approximately 3/4" for the projector bracket.
- Q. Do I need to order the SLB projector bracket separately?
A. No, the assembly ships complete when you order an RPA Ceiling Mount. The SLB bracket is a separate part number and is used only for Chief SMART-LIFTS™. The RPA part number includes both the universal top and SLB bracket.
- Q. How much assembly is required for the RPA?
A. None, just attach the SLB bracket to your projector. If you choose to use All-Points™ you will need to replace indicated screws with included hardware. No disassembly needed.
- Q. How much weight does the mount hold?
A. Each mount is custom designed to support the weight of the projector models specified. However, your ceiling must hold at least 5x the weight of your installation.
- Q. How does the All-Points™ Security System work?
A. All-Points™ is an integrated security system that uses security hardware at all key connection points to protect projectors from theft. A steel-into-steel design makes All-Points™ more effective than other integrated security systems.
- Q. Do I have to order All-Points™ separately?
A. No, All-Points™ is included in all RPA packages at no additional cost and is optional to use.
- Q. Do I need any additional accessories to install the RPA?
A. The RPA can be flush mounted to the ceiling without any additional accessories for a low profile, simple installation. However, often times you will need to lower the projector from a structural, finished or suspended ceiling. For these common applications, you will want to order the appropriate accessories. To choose the right solution for your installation, see pages 17–24.
- Q. When do I need to use the LSB-100?
A. Often times, ceiling structures will not allow the projector to be mounted in exact alignment with the projection screen. The LSB-100 Lateral Shift Accessory saves an abundance of time and hassles in trying to solve this common problem. Also use the LSB-100 to easily accommodate different lens placement when projectors are replaced in existing installations.
- Q. If I use the RPA with a Suspended Ceiling Kit, do I need an extension column?
A. Yes. Any 1 1/2" NPT threaded extension column will work with Chief's Suspended Ceiling Kits. See page 20 for extension column accessories.
- Q. How does the RPA design create natural convection ventilation?
A. Chief's brackets are custom designed to allow for airflow that ventilates and helps cool projectors.

RPA-9000 Mount with Universal Infocus Projector Bracket

The RPA-9000 takes the superior RPA Mount design and functionality a step further by integrating a universal interface bracket. This universal interface bracket is designed to accommodate more than 90 different projector models, including all Infocus Multi-Use and Meeting Room Projectors. The cross-reference chart indicates the projectors that fit the RPA-9000 Mount. Hardware for attaching to all projector models is included.

RPA SERIES INVERTED CEILING MOUNT (CONTINUED)

ORDERING STEPS

1. Determine which RPA Series Mount to order by cross-referencing the projector manufacturer and model number on the cross-reference chart. You can obtain a copy of the most recent cross-reference information by visiting www.chiefmfg.com or calling 1.800.582.6480 (domestic) / 952.894.6280 (international). To automatically receive Chief's updated cross-reference chart via e-mail, go to www.chiefmfg.com and select "Newsletter Subscribe" from the "Contact Us" menu and fill out the form to subscribe to the bi-weekly Cross-Reference Update.
2. Determine which accessories you will need for your installation. Choose from among the recommended accessories below, or see page 17 for more options.

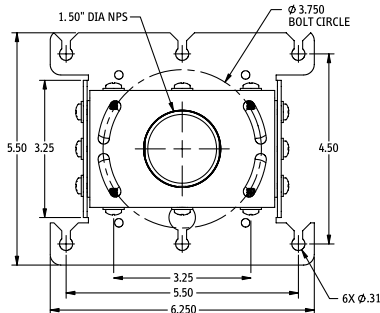
RECOMMENDED ACCESSORIES

CMA-100	8" Ceiling Plate with Attached Adjustable 1 1/2" NPT Column	Page 18
CMA-110	8" Ceiling Plate with 1 1/2" NPT Opening	Page 18
CMA-115	6" Ceiling Plate with 1 1/2" NPT Opening	Page 18
CMA-330	Offset Ceiling Plate	Page 18
CMA-440	Light Weight Suspended Ceiling Kit	Page 19
CMA-450	Suspended Ceiling Kit	Page 19
CMA-455	Suspended Ceiling Replacement Kit	Page 19
LSB-100	Lateral Shift Bracket for LCD/DLP Projectors	Page 20
WMA-300	Wall Mount Arm	Page 22

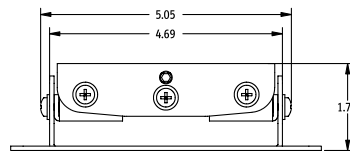
FOR MORE ACCESSORIES SEE PAGES 17–24.

TECHNICAL INFORMATION

For additional technical information, visit www.chiefmfg.com.



TOP VIEW



FRONT VIEW
ADD .75\"/>



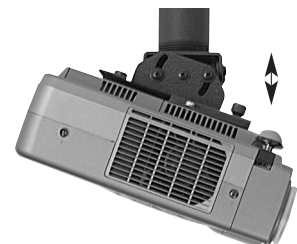
RPA UNIVERSAL TOP



SLB BRACKET



ROLL ADJUSTMENT $\pm 4^\circ$



PITCH ADJUSTMENT $\pm 25^\circ$

Three Mounting Methods:

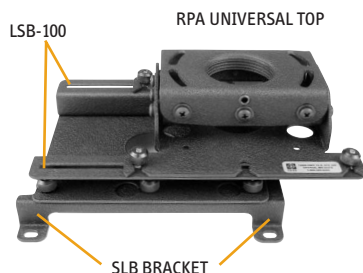
1. Flush mount to suitable ceilings using the four corner slots in top of the RPA Mount. The RPA allows you to flush mount without disassembly by providing suitable access for screwdrivers and socket sets. ± 25 degrees of pitch when flush mounted. 12 degrees yaw possible on flush mount with slots in top of RPA (Hardware not included).
2. 1/4" Threaded Rod using the four corner slots in the top of the RPA. (Threaded Rod not included.)
3. 1 1/2" NPT Threaded Extension Column using the threaded opening at the top of the RPA Mount. (Threaded Extension Column not included. See page 20.)

Convenient Lamp and Filter Access:


Custom design of most RPA projector brackets provides needed access for: quick lamp changes, easy filter cleaning and proper projector ventilation.

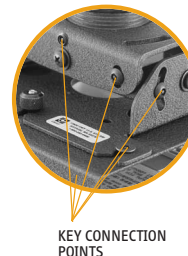
Quick Projector Disconnect/Reconnect:

To quickly and easily remove the projector from the ceiling: loosen thumbnuts connecting the SLB bracket to the universal top. Remove projector and SLB from universal top. The universal top retains the registration adjustments. This feature makes projector servicing and maintenance quick and easy by eliminating the need for re-registration. Security wrench included for use when thumbnuts are replaced with All-Points™ Security System hardware.



LSB-100 Lateral Shift Accessory:

Often times ceiling structures will not allow the projector to be mounted in exact alignment with the projection screen. The LSB-100 Lateral Shift Accessory saves an abundance of time and hassles in trying to solve this common problem. The LSB-100 allows the projector to be shifted three inches right or left of the installation spot (5 3/4 inches on projectors under 15 lbs.). Also use the LSB-100 to easily accommodate different lens placement when projectors are replaced in existing installations. Compatible with all RPA and UPC Series Mounts, and maintains quick disconnect feature. Includes All-Points™ Security System hardware. 



KEY CONNECTION POINTS

Exclusive All-Points™ Security System

Each RPA is shipped with Chief's exclusive All-Points™ Security System – free-of-charge and optional to use. All-Points™ is an integrated security system that uses security hardware at all key connection points to protect projectors from theft. A steel-into-steel design makes All-Points™ more effective than other integrated security systems.

*For additional RPA security, order SSC-4 RPA Security Screw Cover Kit.