

# JELCO ATA Shipping Case

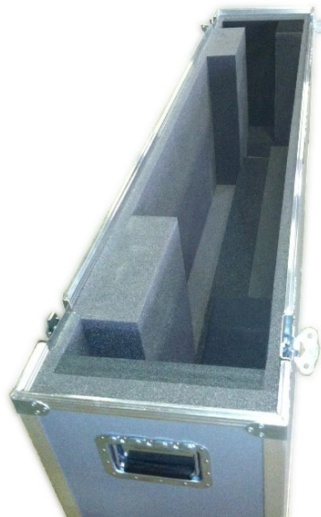
## For 37"-70" Flat Screen Displays

### Features:

- Built to ATA-300 Category 1 standards
- Includes recessed handles, spring loaded twist lock latches, stamped nickel-plated large flat corners, key locks and 4" locking casters
- Fully foam lined, with industrial grade foam custom to your display model
- Rugged ABS plastic, laminated over premium grade marine plywood



Exterior



Single Interior

### Single Display Cases

#### JEL-PDP42T1—Compact Style

- Designed for 37"-46" displays

#### JEL-PDP50T1—Compact Style

- Designed for 46"-52" displays

#### JEL-PDP60T1—Compact Style

- Designed for 55"-60" displays

#### JEL-PDP70T1—Compact Style

- Designed for 65"-70" displays

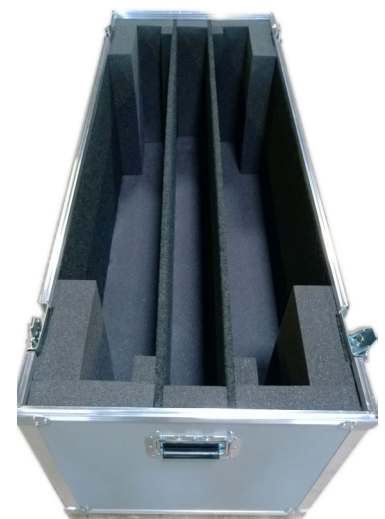
### Dual Display Cases

#### JEL-FP46X2

- Designed to fit two 46" displays with additional center slot for accessories

#### JEL-FP55X2

- Designed to fit two 55" displays with additional center slot for accessories



Dual Interior



**Making Your Gear as Mobile as You Are.**

450 Wheeling Rd. | Wheeling, IL 60090 toll free: 888-875-3526 | phone: 847-459-5207 fax: 847-459-5262 | [www.jelcoinc.com](http://www.jelcoinc.com)

JELCO is a registered trademark of JELCO, INC.