

Orchestrating a brighter world

NEC

Professional Installation Projectors ideal for
corporate, higher education and museum applications

PA Series



Powerful installation projectors equipped to take on the most demanding integration projects

Powerful Tools

- Multi-display support with Picture by Picture/Picture Out Picture
- TileMatrix (internal multi-screen splitter) enables 4Kx2K resolution utilizing 4 projectors without the need for external hardware
- Built-in daisy chain capabilities support multi-display applications
- Seamlessly blend multiple images with integrated edge blending capabilities

Integrated

- 4K Ready - Display stunning 4K 60P content using NEC's proprietary high performance video processing/scaling chip without the loss of critical details. HDR10 and BT.2020 signals from "Ultra HD Blu-ray" and "4K TV broadcasting" are supported on all digital inputs.
- Integrated software applications such as AMX Beacon, Crestron Roomview, Extron XTP and PJ Link
- allow for complete control system support
- Basic control of competitors product reducing the need for reprogramming of a control system. (call NEC for complete list)

4K UHD
READY*

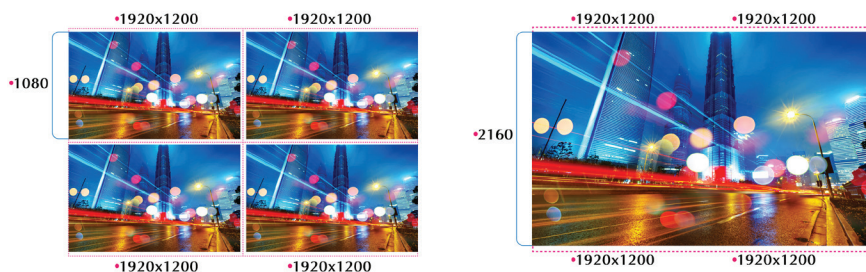
Flexible

- Enjoy greater installation flexibility with a complete line of optional bayonet style lenses for quick and easy exchange. Lens throw distances range from 2.5 to 68.5 ft
- Tilt-free installation capabilities make these projector ideal for almost any install environment, including portrait orientation
- Up to 60% vertical lens shift and +/- 30% horizontal lens shift capabilities make alignment easy

Screen Splitter

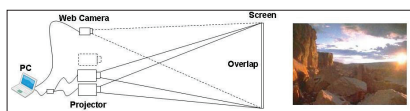
NEC is committed to bringing the latest and greatest innovation to projectors. Multi-display capabilities and TileMatrix technologies are integrated into the new PA series projectors. This processing is all done internally and therefore eliminates the additional hardware typically required to produce a beautiful 4K resolution image.

Screen Splitter (Multi Display) by Daisy Chain



Stacking correction

The industry's first built-in stacking correction capabilities (up to four projectors) allows the projectors to boost an image's brightness up to 36,000 lumens, which is ideal for larger-sized screens and environments with heavy ambient light. This feature also prevents the complete loss of an image, which can happen when using only one projector.



Edge blending

This function seamlessly blends multiple projected images to display a single high-resolution image.



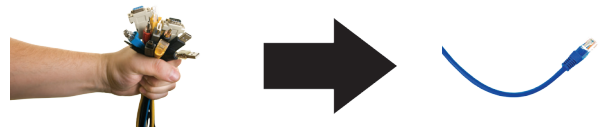
MultiPresenter

Utilization of the optional MultiPresenter Stick provides those looking for a network connection easy connection with up to 12 devices at once. (Win, MAC, Android, iOS) Screen mirroring for Android and Win. Simple annotation software.



Built-In HDBaseT Support

Simplify your installations with HDBaseT. Optimized for video applications and supporting uncompressed full HD digital video, audio, ethernet, power and various control signals. With only a single cable (up to 100m) to run, infrastructure and labor costs are reduced, installations are significantly easier, and there is no cable clutter to manage. With uncompressed HD video support, images have never been more stunning. What's more, control signals are contained in the same cable.



GET CONNECTED WITH A WIDE SELECTION OF INPUTS

- **Multiple Digital computer inputs** ensure quick switching between presentations
- **Five audio inputs (one mini stereo [HDMI1™ & HDMI2™, DisplayPort and HDBaseT])** make it easy to add sound to enhance your presentations

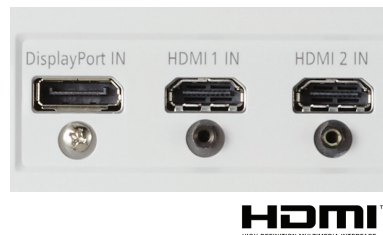
Remote control

Wired and wireless backlit remote allows you to adjust for complete control of the projector's menu structure in a well lit or dark environment. Direct controls such as lamp mode, aspect ratio, volume and input selection eliminates multiple button pushes.



Digital Inputs

Among the PA Series' wide selection of inputs are dual HDMI w/HDCP and DisplayPort w/HDCP for connecting to high-definition sources such as Blu-ray players, cable boxes, satellite receivers and personal computers.



Input panel cover

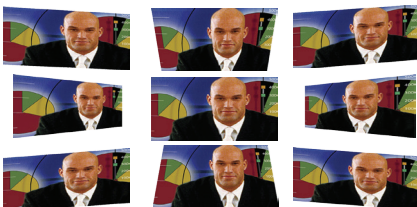
This optional accessory creates a clean look for your installation, while hiding signal cables and the power cord.



ADVANCED SOFTWARE FEATURES

Cornerstone

Enhanced keystone correction allows for horizontal, vertical and diagonal image correction for aligned images even when the projector is set up at an angle to the screen.



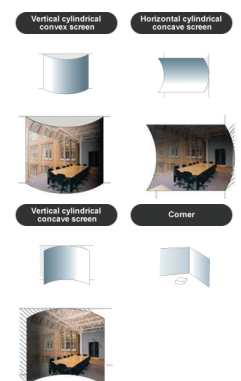
3D

When combined with active shutter glasses and 3D emitter, the PA Series Projectors create 3D images from a computer or Blu-ray player. The PA Series utilize the 3D sync line output from the projector to connect to the 3D emitter. Optional 3D glasses and emitters from XPAND are available from NEC.



Geometric Correction

Projecting an image isn't confined to a standard flat screen or wall with the NEC PA Series. Geometric correction allows these models to project an image on spheres, cylinders, corner angles and many more non-standard surfaces.



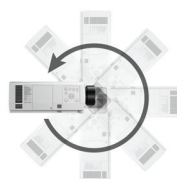
10,000-hour filter life

NEC is committed to designing its products to provide long lifecycles. This virtually maintenance-free filter reduces the frequency at which cleaning is required, thereby decreasing total cost of ownership.



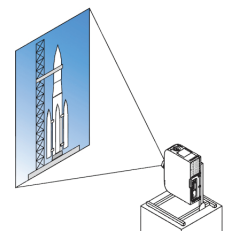
Tilt-free

The projector can be rotated freely (360°) to orient the image depending on the installation requirements.



Portrait mode

Allows the projector to be rotated (and screen if necessary) to a vertical alignment so that portrait content can be viewed without black bars on the side when landscape mode is used.



UNIQUE FEATURES

Variable audio-out enables the remote control to be used to adjust volume of self-powered external speakers that are connected to the projector. In stand-by mode, the audio-out stays active, allowing the last input used to pass to the self-powered external speakers.

Advanced AccuBlend™ ensures detailed images when non-native resolution sources are connected to the projector

64-step image magnification with location control

Built-in HTTP page for control and monitoring over a LAN network. Email notification of error messages or lamp end-of-life can be sent to remote locations.

WARRANTY

Registered owners receive a 3-year parts and labor warranty including the first year of InstaCare. The lamp is covered for one year or 500 hours, whichever comes first. InstaCare provides the original owner one year of either limited 3 business day repair/return or next business day exchange.

IN THE BOX

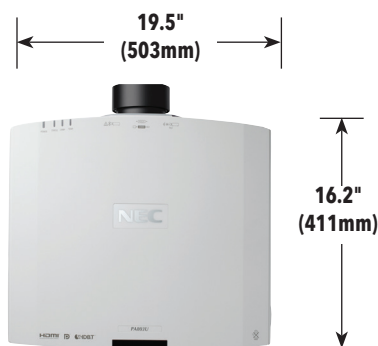
Remote control, batteries, power cord, user's manual on CD-ROM, quick start guide, product registration card.

ACCESSORIES

NP42LP	Replacement Lamp
RMT-PJ37	Replacement Remote Control
Optional Lenses	NP11FL, NP12ZL, NP13ZL, NP14ZL, NP30ZL, NP40ZL, NP41ZL, NP42ZL, NP43ZL
DS1-MP10RX1	MultiPresenter Stick
NP10CV	Terminal Cover
NP06FT	Replacement Filter
XPAND X105-RF-1	3D Glasses
XPAND ADO25-RF-X1	RF Emitter
PA600CM	Ceiling mount
AEC006009	Adjustable Extension Column, 6" - 9"
AEC012018	Adjustable Extension Column, 12" - 18"
AEC0203	Adjustable Extension Column, 2' - 3'
AEC0305	Adjustable Extension Column, 3' - 5'
NP01PW1	Power Cord
RGBCBL-PJPX	RGB Signal Cable
NECEW2-I	Extends term of parts and labor warranty to 4 years
ADVEXON1-I	Extends term of InstaCare service program to 2 years
ADVEXON2-I	Extends term of InstaCare service program to 3 years

ORDERING MODEL NUMBERS

NP-PA653U
NP-PA803U
NP-PA853W
NP-PA903X



			PA653U	PA803U	PA853W	PA903X	
Display Technology			0.76" LCD w MLA				
Light Output (lumens)			6500 normal		8000 normal	8500 normal	9000 normal
Resolution		Native	WUXGA 1920 x 1200			WXGA 1280 x 800	9000 normal
		Maximum	4K 4096 x 2160				XGA 1024 x 768
Contrast Ratio (up to)			8,000:1 with auto iris		10,000:1 with auto iris		
Lamp Life (up to)			4000 hours normal / 5000 hours eco		3000 hours normal / 5000 hours eco		
Screen Size (diagonal)			40 to 500 in. / 1.02 to 12.7m, NP40ZL, NP41ZL, NP43ZL (50 to 500 in. / 1.27 to 12.7m)				
Throw Ratio		NP11FL	0.79:1				
		NP30ZL	0.79 - 1.04:1				
		NP12ZL	1.16 - 1.52:1				
		NP13ZL	1.46 - 2.95:1				
		NP14ZL	2.90 - 4.68:1				
		NP40ZL	0.79 - 1.11				
		NP41ZL	1.30 - 3.02				
		NP43ZL	2.99 - 5.93				
Projection Distance			2.5 to 68.5 ft. / 0.74 to 20.9m				
Projection Angle			10.3 to 10.8° tele / 13.7 to 14.5° wide				
Lens		Zoom		Powered / Manual			
		Zoom Ratio	NP11FL	-			
			NP30ZL	1.3:1			
			NP12ZL	1.3:1			
			NP13ZL	2.0:1			
			NP14ZL	1.6:1			
			NP40ZL	1.4:1			
			NP41ZL	2.3:1			
			NP43ZL	2.0:1			
		Focus		Powered / Manual			
NP11FL	Manual zoom / Manual focus, F= 2.3, f= 13.2mm, 2.6 lbs. / 1.2 kg						
NP30ZL	Manual zoom / Manual focus, F= 1.9 to 2.1, f= 13.2 to 17.2mm, 2.6 lbs. / 1.2 kg						
NP12ZL	Manual zoom / Manual focus, F= 2.2 to 2.69, f= 19.4 to 25.3mm, 2.6 lbs. / 1.2 kg						
NP13ZL	Manual zoom / Manual focus, F= 1.7 to 2.37, f= 24.2 to 48.6mm, 1.9 lbs. / 0.84 kg						
NP14ZL	Manual zoom / Manual focus, F= 2.2 to 2.64, f= 48.5 to 77.6mm, 2.6 lbs. / 1.2 kg						
NP40ZL	Power zoom / Power focus, F=2.0 to 2.5, f= 13.3 to 18.6mm, 3.6lbs. / 1.63 kg						
NP41ZL	Power zoom / Power focus, F=1.7 to 2.0, f= 21.8 to 49.8mm, 3.9 lbs. / 1.75 kg						
NP43ZL	Power zoom / Power focus, F=2.2 to 2.6, f= 49.7 to 99.8mm, 3.9 lbs. / 1.77 kg						
	Shift	Powered +0.5/-0.1 vertical, +/-30 horizontal					
Keystone Correction			+/- 40° horizontal, +/- 40° vertical				
Synchronization Range		Horizontal	Analog: 15-100kHz, Digital: 15-153kHz				
		Vertical	Analog: 48-120Hz, Digital: 24-120Hz				
Supported Video Standards			NTSC, NTSC4.43, PAL, PAL-60, PAL-M, PAL-N, SECAM				
SD/HD Video Signal Compatibility			1080p, 1080i, 720p, 576p, 576i, 480p, 480i				
PC Signal Compatibility			VGA, SVGA, XGA, SXGA, SXGA+, UXGA, WUXGA				
Macintosh Compatibility			Yes				
Input Terminals		RGB1 (analog)	VGA 15 pin D-sub, Component video using ADP-CV1E adapter				
		RGB2 (digital)	HDMI (V2.0) w/HDCP (1.4/V2.2)				
		RGB3 (digital)	HDMI (V2.0) w/HDCP (V1.4/2.2)				
		RGB4 (digital)	DisplayPort w/HDCP (V1.4)				
		RGB5 (digital)	HDBaseT w/HDCP (V1.4/2.2)				
		Audio1	Stereo Mini Jack				
Output Terminals		Monitor Out	HDBaseT				
		Audio Out	Stereo Mini Jack				
		3D Sync Line	3Pin D				
External Control			RS-232, IR, HDBaseT, DDC/CI, RJ-45				
Sync Compatibility			Separate Sync / Composite Sync / Sync on G				
Power Requirements			100 - 240VAC, 50/60Hz				
Input Current			5.6A - 2.7A	6.2A - 3.1A			
Power Consumption							
(ECO off/ECO Mode/Standby/Standby-Power Saving)			506W/390W/0.7W/0.3W	566W/390W/0.7W/0.3W			
Installation Orientation			Floor/Front, Floor/Rear, Ceiling/Front, Ceiling/Rear				
Dimensions (WxDxH)			19.8 x 16.2 x 6.6 in. / 503 x 411 x 168mm				
Net Weight			22.5 lbs. / 10.2 kg				
Fan Noise			39 dB normal / 33 dB eco				
Regulations			USA: UL 1950 FCC Class B, Canada: CSA950 (C-UL), NOM				
Operating Temperature			41° - 104°F / 5° - 40°C				
Humidity			20-80% non-condensing				
Storage			-14° - 122°F / -10° - 50°C				

* Lens does not ship with the projector.
Additional accessories are available, including screens, carts, mount accessories and replacement cables. Visit www.necdisplay.com for details.

3D Reform, Advanced AccuBlend, AutoSense and ECO Mode are trademarks of NEC Display Solutions. HDMI, the HDMI Logo and High-Definition Multimedia Interface are trademarks or registered trademarks of HDMI Licensing LLC. HDBaseT™ and the HDBaseT Alliance logo are trademarks of the HDBaseT Alliance. All other brand or product names are trademarks or registered trademarks of their respective holders. Product specifications subject to change.

©2017 NEC Display Solutions of America, Inc. All rights reserved.

Cat.No. 25.NEC.80.GL.UN.279 | rev 7.10.17

www.necdisplay.com

