



Targa electric projection screen. Ideal for auditoriums and lecture halls, hospitals, hotels, churches, boardrooms and conference rooms. The motor is mounted inside the roller, for a clean low-profile appearance. Pentagonal steel case is scratch-resistant white polyester finish with matching endcaps.

## Screen Type

Motorized, wall or ceiling-mounted projection screen

## Viewing Surfaces

- **OptiView Family** (self-supporting front screen surfaces): Matt White XT1000E, Contrast Grey XH800E, Contrast White XH1100E, Argent White XH1500E, Pearl White CH1900E, Glass Beaded CH3200E, Ecomatt XT700E
- **ClearSound Family** (acoustically transparent screen surfaces): ClearSound White Weave XT900E, ClearSound Grey Weave XH600E, ClearSound Perf XT950E
- Chroma Key Blue, Chroma Key Green

## Features

- Includes one 110-120v or 220v 3-position switch
- NTSC, HDTV and 16:10 format screens have black borders on all four sides
- Case dimensions are 5<sup>7</sup>/<sub>8</sub>" H x 5<sup>1</sup>/<sub>4</sub>" D (14.9 cm H x 13.3 cm D), some larger sizes require case that is 6<sup>3</sup>/<sub>4</sub>" H x 6<sup>3</sup>/<sub>4</sub>" D (17.1 cm H x 17.1 cm D)
- Screen operates instantly at the touch of a button and stops automatically in the "up" and "down" positions
- Warranted for one year against defects in materials and workmanship

## Options

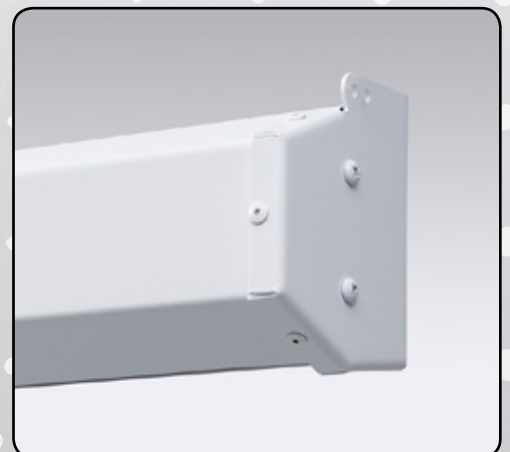
- **Controls**—Can be furnished with standard [control options](#)
- **Motors**—Available with [Plug & Play Motor with built-in Low Voltage Controller](#), [Plug & Play with built-in Quiet and Low Voltage Controller](#) and 220v motor
- **Viewing Surfaces**—Numerous self-supporting [viewing surfaces](#) available
- Available with a ceiling trim kit for ceiling recessed installation
- Floating Screen Brackets available for more flexible installation
- Black side borders are available upon request for AV
- Extra drop above viewing area available, specify color

## Sizes

- **16:10 Format**—from 67" (170 cm) to 222" (564 cm) diagonal
- **16:9 HDTV Format**—from 65" (165 cm) to 220" (559 cm) diagonal
- **4:3 NTSC/PAL Format**—from 72" (183 cm) to 240" (610 cm) diagonal
- **AV Format**—from 50" x 50" (127 cm x 127 cm) to 16' x 16' (488 cm x 488 cm) viewing area
- Custom sizes available

## Supporting Documents

All instructions, technical drawings and other supporting documents are located at <http://www.draperinc.com/ProjectionScreens/DocumentListing.asp> in our document library.



For more information on this product visit:  
[www.draperinc.com/go/Targa.htm](http://www.draperinc.com/go/Targa.htm)

